



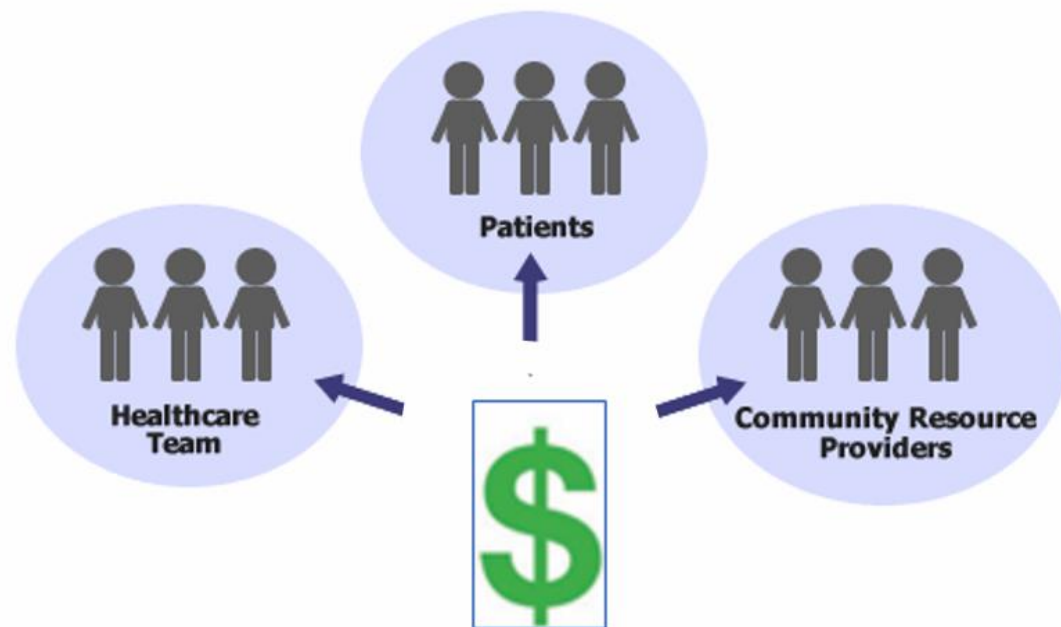
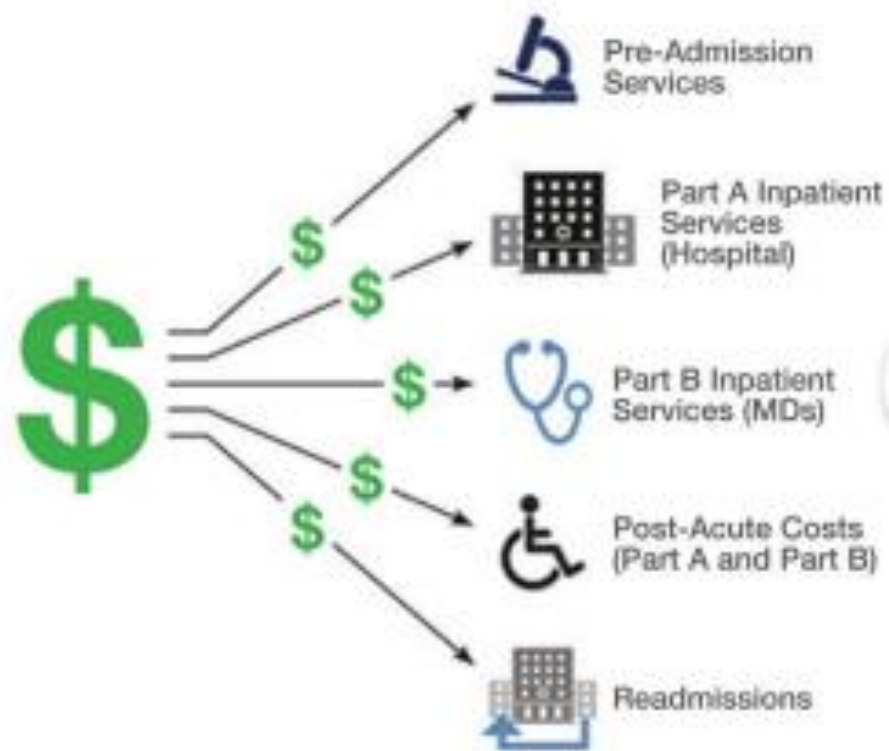
The Dual Project: Collaborative Care for Thriving Communities

Team 6

An innovative way to fund and
incentivize patients, health care and
communities to collaborate so the
patient can thrive.

Old vs New Model

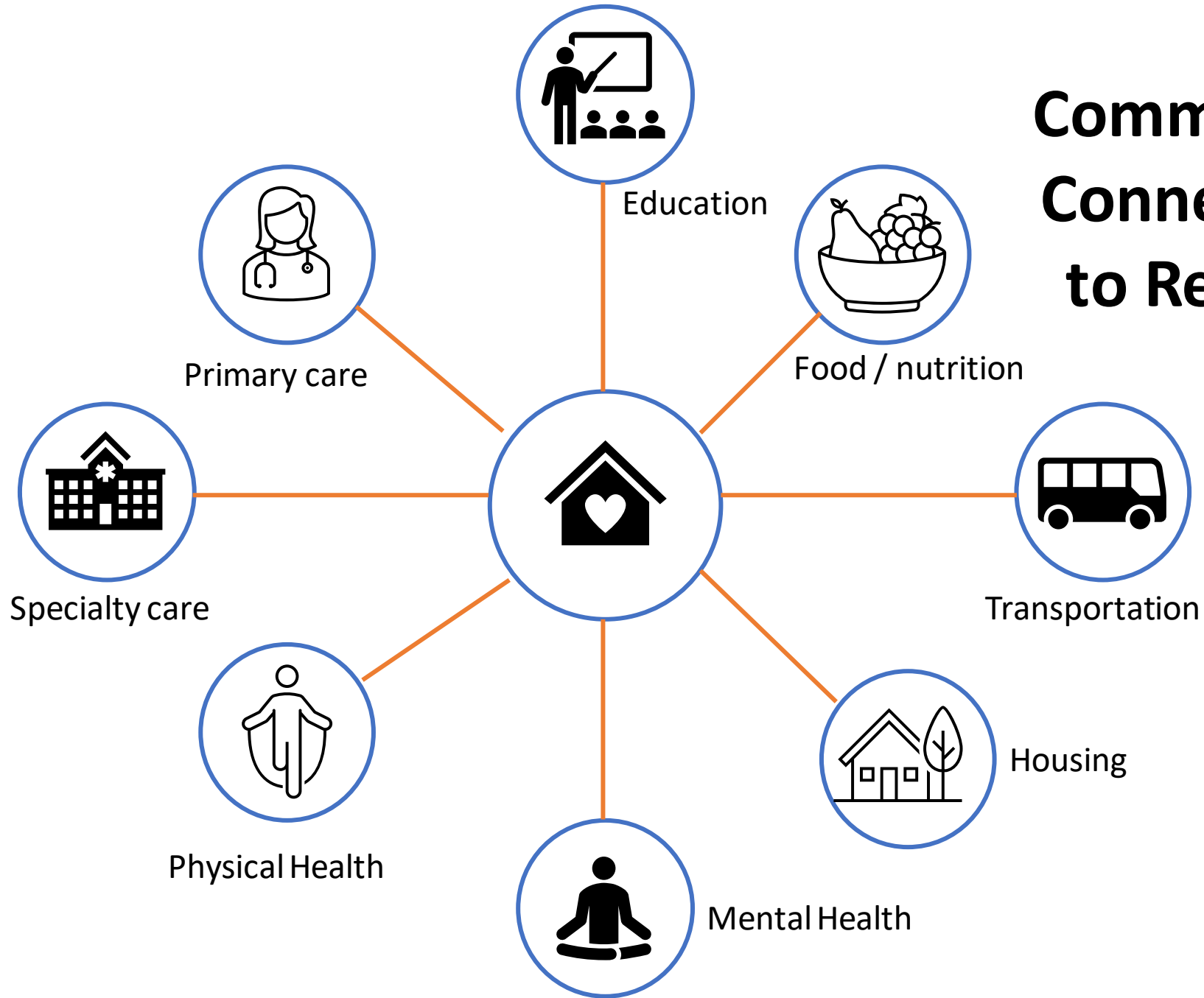
Payment for each service regardless of quantity or quality



Key Characteristics of Model

- Increase federal funding for prevention services.
- Community hubs are the navigation service where patients are directed to personalized care solutions.
- Traditional payors (medicaid, medicare, health insurance) divide allocations between providers, community hubs, and patients.
- Parties are equitably incentivized to focus on upstream services to improve health outcomes.
- Technology that uses artificial intelligence will integrate services and will provide accountability for all parties.

Community Hubs Connect Patients to Resources for Thriving





Success

- Success markers: improve experience and outcome
 - **Short-term:** more consistent connection with primary care and supplemental services.
 - **Mid-term:** People know where to go, how to get the help that they need, and trust the people once they get there.
 - **Long-term:** Social return on investment and reduced health care costs.



Measurements

- Measurements of success:
 - Patient engagement (visits, satisfaction, communication).
 - Patient outcomes (patient reported outcome measures, community healthcare scores).
 - Return on investment and more equitable healthcare spending.